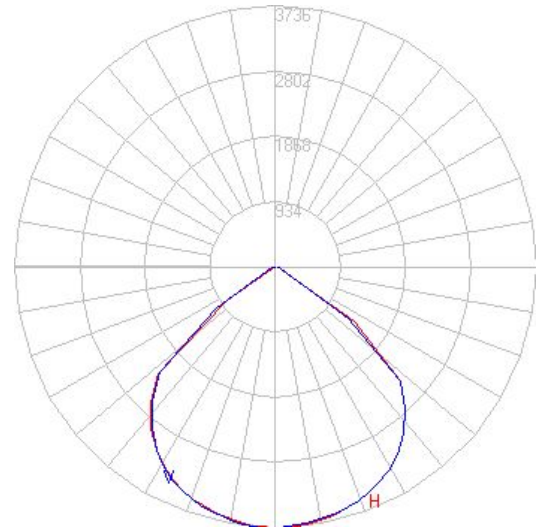


LENS 2x3-90°

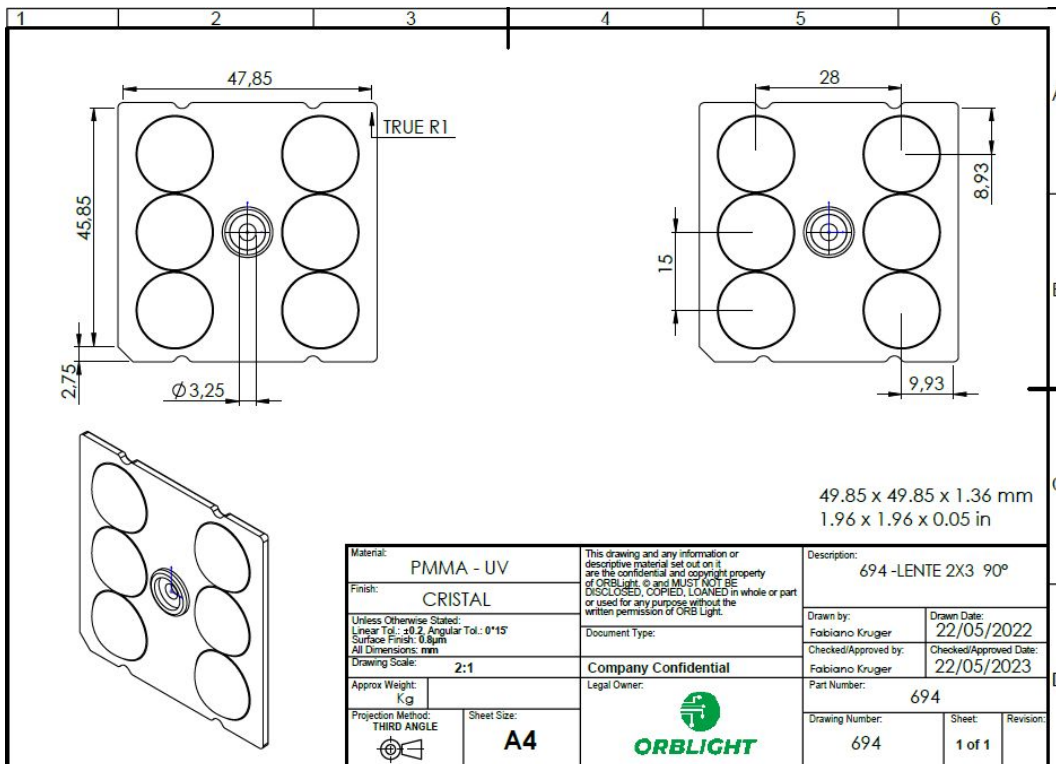


* Illustrative images.

TECHNICAL SPECIFICATIONS

MODEL	LENS 2x3 90°
HORIZONTAL BEAM ANGLE(50%)	91.4°
VERTICAL BEAM ANGLE(50%)	91.8°
HORIZONTAL FIELD ANGLE(10%)	123.8°
VERTICAL FIELD ANGLE(10%)	124.3°
LED	5050
EFFICIENCY	≥ 94%
PHOTOMETRIC CLASSIFICATION* (NEMA)	6 H x 6 V
DIMENSION(mm/in)	49,85x49,85x1,36 / 1,96 x 1,96 x 0,05
MATERIAL	POLYMETHYL METHACRYLATE / POLYCARBONATE
OPERATING TEMPERATURE	85°C
WARRANTY	2 YEARS SUBJECT TO TECHNICAL EVALUATION

TECHNICAL DRAWING



* Possible variation due to the constructive characteristics of the product where the lens is being mounted;

** All results were obtained through photometric test with OSRAM 5050, may contain variations with another model of LED.