

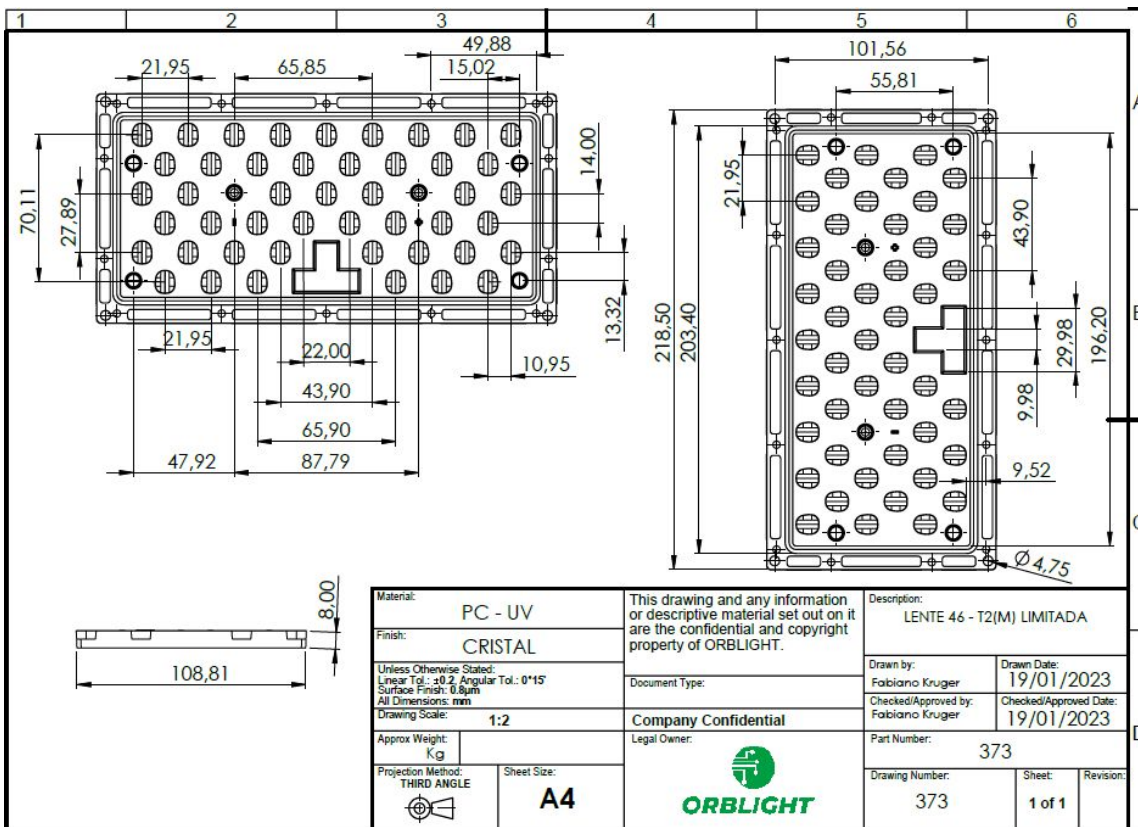
— C0-C180 — C90-C270

* Illustrative Images.

TECHNICAL SPECIFICATIONS

MODEL	LENS 46 TII-M
OPENING ANGLE C0-C180*	150°
OPENING ANGLE C90-C270*	54°
INDICATED LED	5x5mm (5050)
EFFICIENCY	≥ 92%
PHOTOMETRIC CLASSIFICATION*	TYPE II LIMITED AVERAGE
DIMENSION (mm / in)	108.8 x 218.5 / 4.28x8,6
MATERIAL	POLYMETHYL METHACRYLATE / POLYCARBONATE
MAXIMUM OPERATING TEMPERATURE	85°C
WARANTY	2 YEARS SUBJECT TO TECHNICAL EVALUATION

TECHNICAL DRAWING



*Possible variation due to the constructive characteristics of the product where the lens is being mounted;

** All results were obtained through a photometric test with an OSRAM 5050 LED.