

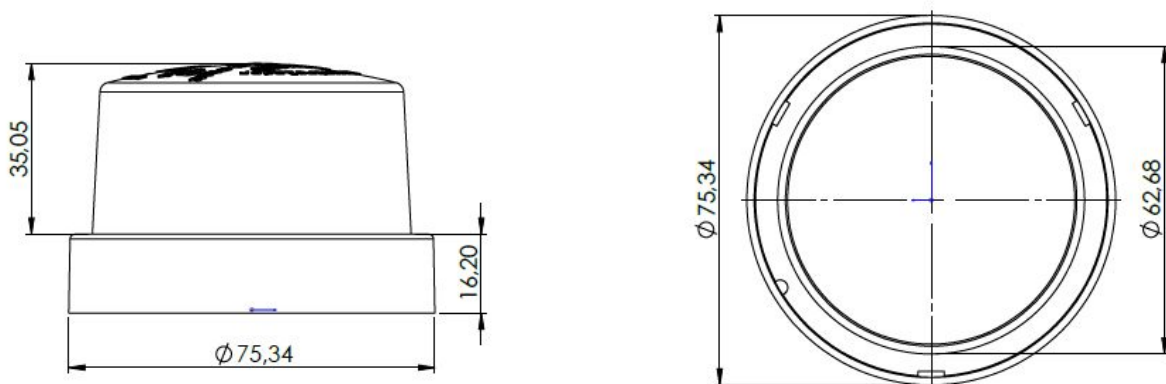


* Illustrative Images.

Technical Specifications

MODEL	SHG
NOMINAL VOLTAGE RANGE	127 - 220V ~ 50/60Hz
CONSUMPTION	0W NO CONSUMPTION
PROTECTION	IP 65
MATERIAL	PP - POLYPROPYLENE ZINC PLATED BRASS COPPER
DIELECTRIC STRENGTH	> 2500V
NOMINAL CURRENT	1000W 15A
INTERCHANGEABILITY	BASES FROM ANY MANUFACTURER CAN BE USED
DIMENSION(mm/in)	51,26 / 2,02
DIAMETER(mm/in)	75,34 / 2,97
WEIGHT(kg / lb)	0,018 / 0,039
WARRANTY	1 YEAR FROM THE DATE OF SALE

Technical Drawing



* Dimensions mm.

