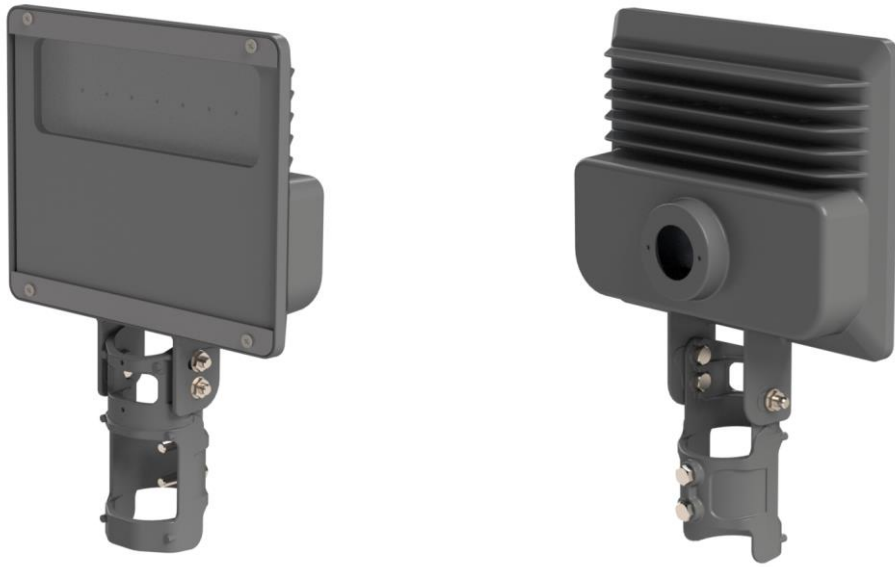


# HOUSING 5 FINS



## TECHNICAL SPECIFICATIONS

Body	High pressure injected aluminum with articulation system +/-20°
Fixation	Fitting for tubes from Ø0,985 in to Ø2,374
Alloy material	SAE 305
Dimensions (+/- 0,19685 in)	15,3637 x 10,6299 x 3,1637 in
Maximum working power	100 W
Weight	4,3827 lb
Country of origin	Made in Brazil
Product warranty	5 year warranty from date of sale

## TECHNICAL DRAWING

