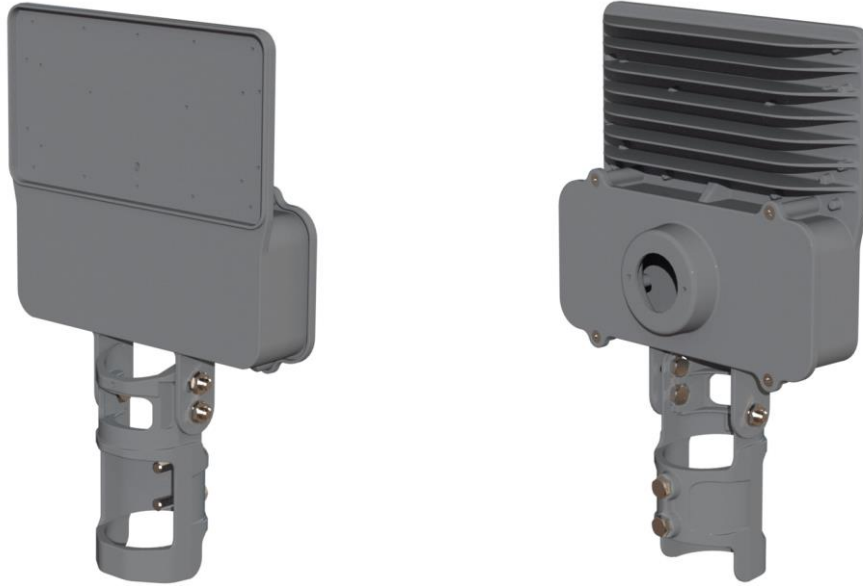


HOUSING 7 FINS



TECHNICAL SPECIFICATIONS

Body	High pressure injected aluminum with articulation system +/-20°
Fixation	Fitting for tubes from Ø0,985 in to Ø2,374
Alloy material	SAE 305
Dimensions (+/- 0,19685 in)	15,3150 x 9,4488 x 3,0511 in
Maximum working power	150 W
Weight	3,611 lb
Country of origin	Made in Brazil
Product warranty	5 year warranty from date of sale

TECHNICAL DRAWING

